

CP-900DW

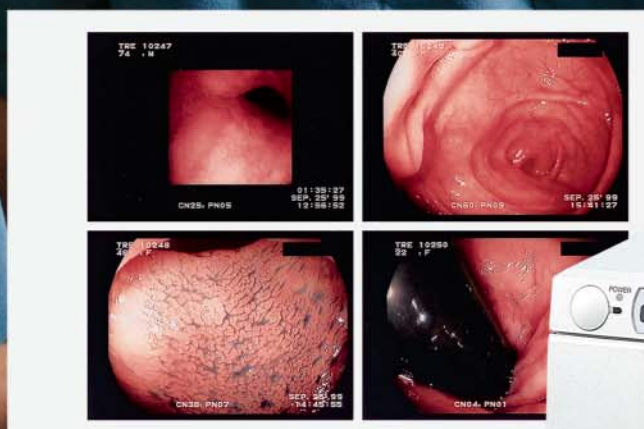
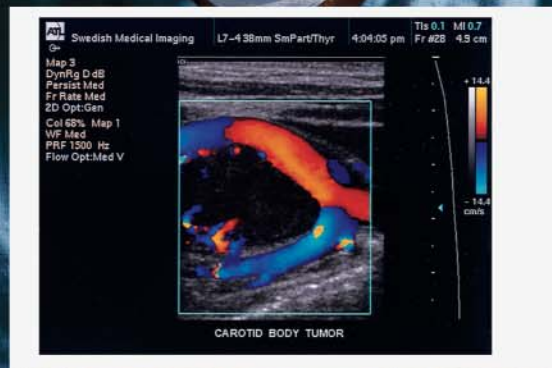
DIGITAL COLOR PRINTER



High Resolution, High Speed Digital Color Printer Designed For Image-Critical Medical Applications

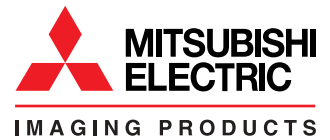


- High resolution, high speed digital color printer
- Jam-free, roll-type mechanism
- Easy-to-use, convenient front access
- High density 325 dpi thermal head
- Color imaging control system



CP-900DW

DIGITAL COLOR PRINTER



High resolution, high speed digital color printer designed for image-critical medical applications.

If You Can Create It, We Can Print It.

HIGH-SPEED

High-speed printing through a new roll mechanism: The CP-900DW uses a new straight paper path that simplifies the paper feed mechanism. The CP-900DW can print an S-size picture in just 12 seconds for immediate medical diagnostics.

COLOR ACCURACY

Sublimation thermal transfer method: Uses a sublimation thermal transfer method that smoothly reproduces 16.7 million colors, from full color to intermediate color.

Unique color imaging control system: In a revolutionary new system, the ink sheet rolls feature built-in Color Imaging Chips that contain specific data about the media. The printer uses this information to accurately control color characteristics. As a result, the CP-900DW delivers high-grade printing with even more stable picture quality.

New built-in 325 dpi thermal head: Uses a 325 dpi high-density, high-efficiency head. Reproduces images obtained by medical imaging equipment with even sharper detail.

Enhanced media whiteness: To maximize the high picture quality, a new paper with enhanced whiteness is provided.

EASY OPERATION

Straight paper path for simple media installation: The new roll mechanism's semi-automatic paper feed makes installation of media even simpler. Just set the media in the prescribed position, and the paper feeds automatically.

Easy front access: With front slide and top access, paper loading and maintenance are extremely simple. Just pull out the front part to load media and other consumables from above.

High reliable roll paper system: Mitsubishi provides the highest reliability and quality with our roll paper system. By eliminating paper jams and with a high capacity print roll, Mitsubishi provides the prints that are necessary during critical applications. Doctors will have less downtime when they need a printout the most.

PERFORMANCE VERSATILITY

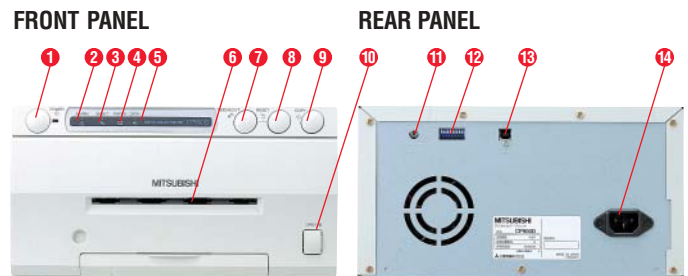
The USB port connector can be used with the following: Computers pre-installed with Windows 98/Millennium/2000/XP. Computers installed with Windows 98/Millennium/2000/XP that are USB-guaranteed by manufacturer.

Monitoring of remaining amount of ink sheets: A Color Imaging Control Chip monitors the amount of remaining ink sheets.

Large-capacity, 8MB frame memory: Equipped with a built-in, large capacity 8 MB frame memory that memorizes the next printing image during printing and supports high-speed printing. This memory holds up to three images.

SPECIFICATIONS	
Print method	Dye sublimation thermal transfer
Number of gradations	256 per color
Display colors	16.7 million
Print paper	Roll type
Head resolution	325 dpi (1280 dots)
Paper size	S size: 4.1 x 4.3" (105 x 110 mm) L size: 4.3 x 6.3" (110 x 160 mm)
Print size	S size: 2.9 x 3.9" (75 x 100 mm) L size: 3.8 x 5.1" (97.5 x 130 mm)
Print resolution (dot)	S size: 1280 x 960 L size: 1676 x 1280
Print time (sec.)	S size: Approx. 12 seconds L size: Approx. 22 seconds
Paper magazine capacity	S size: 200 sheets L size: 130 sheets
Memory	8 MB
Interface	USB1.1
Dimensions (W x H x D)	11 x 5.9 x 15.7" (279 x 150 x 399 mm)
Weight	24.2 lbs (11 kg)
Power Supply	AC 120V 50/60Hz AC 220-240V 50/60Hz
Compliance	UL60950/UL2601-1; TUV GS/GM, CE (MDD/LVD/EMC) FCC Class A, EN5022
Accessories	Operational manual, 2 power cords, Ink cassette, 4 spacers, and software driver disk

OPTIONS	
CK900S	Standard paper / S size Ink sheet (200 sheets)
CK900L	Standard paper / L size Ink sheet (130 sheets)
CK900S4P	Surface-coated paper / S size Ink Sheet (130 sheets)
CK900L4P	Surface-coated paper / L size Ink sheet (90 sheets)



- | | |
|------------------------------|--|
| 1. Power button | 8. Reset button |
| 2. Alarm lamp | 9. Copy button |
| 3. Sheet / Paper lamp | 10. Open button for front loading tray |
| 4. Option lamp | 11. Remote terminal |
| 5. Data lamp | 12. Mode switches |
| 6. Print outlet | 13. USB port connector |
| 7. Paper feed and cut button | 14. AC line socket |



©2002 Mitsubishi Digital Electronics America, Inc. Standard features, options and specifications subject to change without notice. Microsoft, Windows and the Windows logo are registered trademarks of Microsoft Corporation. All other trademarks or registered trademarks are the property of their respective holders.

Printed on 50% recycled paper including 20% post-consumer fibers, processed chlorine free. Printed with vegetable based inks.

Mitsubishi Digital Electronics America, Inc.
Imaging Products Division
9351 Jeronimo Road
Irvine, CA 92618
Toll Free: 877-JAM-FREE
877-526-3733

Technical Support:
Toll Free: 888-307-0309
Email: tssupport@mdea.me.com

Canada:
Mitsubishi Electric Sales Canada Inc.
Information Technologies Group
Markham, Ontario
905-475-7728

www.mitsubishielectric.ca



ipdinfo@mdea.me.com
www.mitsubishi-imaging.com